

ADAPT-A-VALVE™ INSPECTION CHAMBER ACCESSORIES



Description
Inspection Chamber
Downstream Pressure
Test and Debris Plug

Model Number
ML-4TEPP



Description
Inspection Chamber
Body
4"X4"X8" riser
Gasketed SDR-35
Built to SDR-26 spec

Product Code
ML-4481C



Description
Inspection Chamber
Test/Isolation Gate

Model Number
ML-4TZ



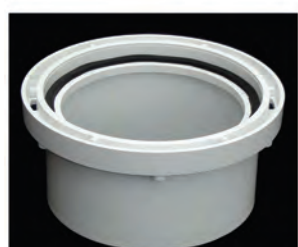
Description
Inspection Chamber
Collar Lids available
in red, blue, green
and white

Model Number
ML-81CLID-R
ML-81CLID-B
ML-81CLID-G
ML-81CLID-W



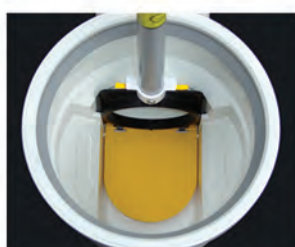
Description
Inspection Chamber
"Normally-closed"
Backflow Cassette

Model Number
ML-4Cass01 NC



Description
Inspection Chamber
Collar
8" PVC SDR-35
solvent weld socket

Model Number
ML-8AAVCOL



Description
Inspection Chamber
"Normally-open"
Backflow Cassette

Model Number
ML-4Cass01 NO

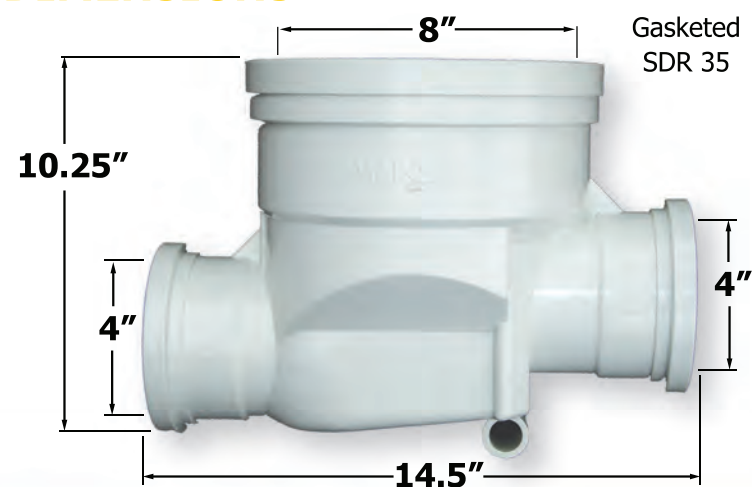


Description
Inspection Chamber
Collar/Lid Combo

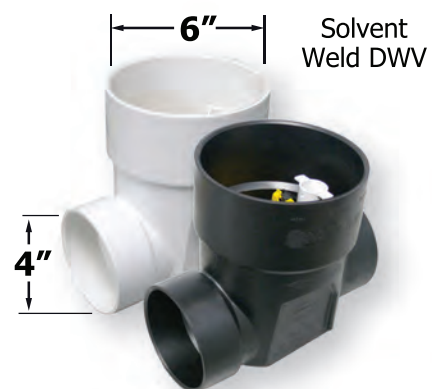
Model Number
ML-8AAV LID/COL
(Specify lid color)

* Please note 3/4" SCHD 40 pipe Not Included (for extended handle)

DIMENSIONS



Gasketed
SDR 35



Description
DWV Solvent Weld Body
(PVC or ABS)
4" X 4" X 6" riser

Model Number
ML-4BDY01 (PVC)
ML-4BDY01 (ABS)

MAINLINE

ADAPT-A-VALVE™ INSPECTION CHAMBER



Mainline developed the Inspection Chamber because they recognized the need for municipalities to have easy access to their storm and sanitary service lines. Inspection Chambers allow municipalities quick convenient access to storm and/or sanitary sewer services for visual inspection or maintenance without gaining access to private property.

ADAPT-A-VALVE™ INSPECTION CHAMBER

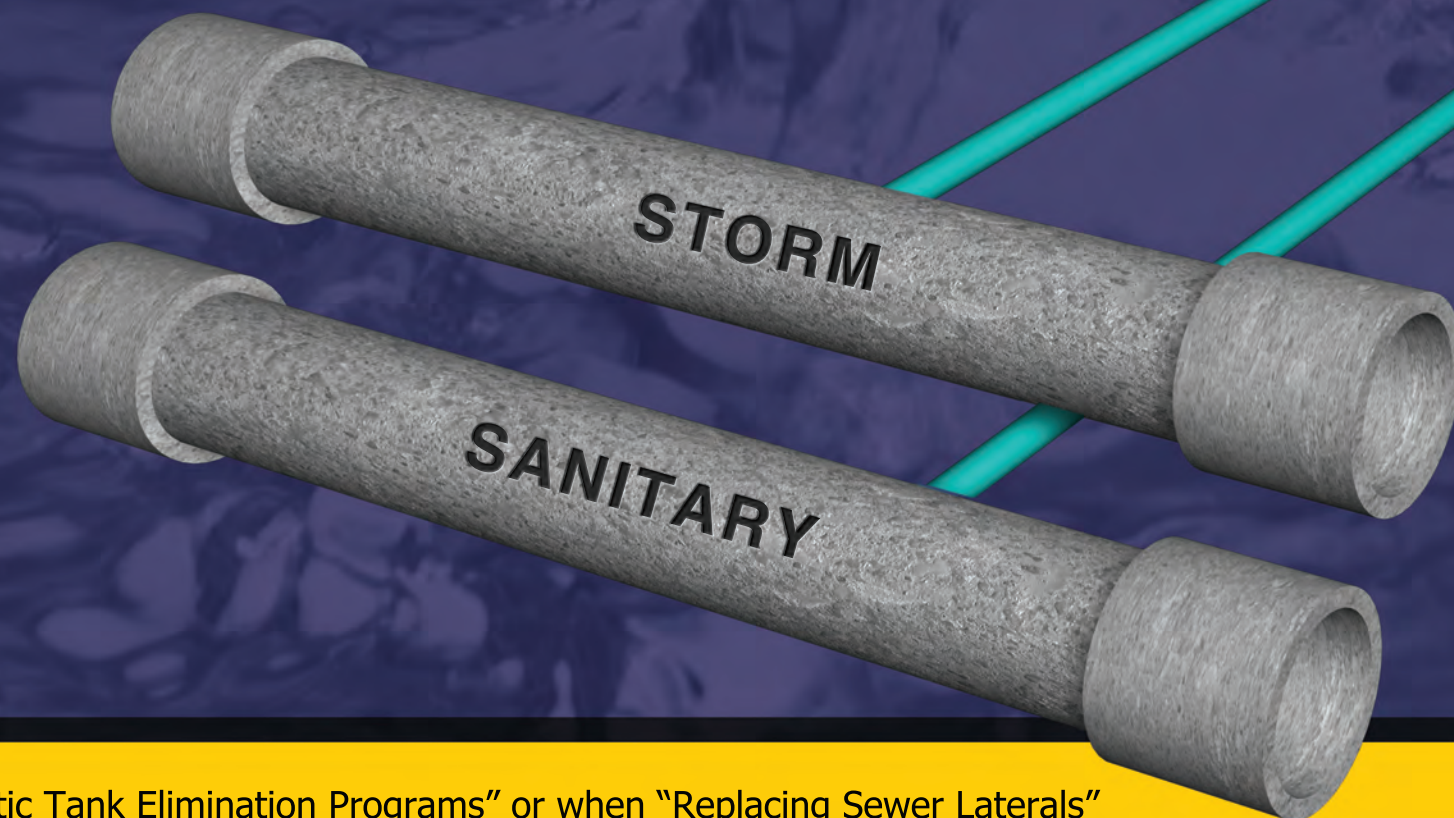
Advantages and Benefits

There are many advantages and benefits for municipalities using our Inspection Chambers, including:

- Easy identifications of sewer locations
- Reduced maintenance calls due to callouts where private property owners claim a municipal blockage
- Allows municipality to determine if blockage is on municipal or private property.
- Repairs without costly or unsightly damage to property
- Easy access for flusher trucks, rodder or camera crews
- Access for inspection in situations of infiltration problems, root build up or root control
- Expense of Inspection Chamber is born during initial development
- RISK MANAGEMENT: eliminates the need for city personnel to enter private properties or residences to access city portion of sewer lateral for maintenance, repair or inspection
- Chamber allows "Sampling" of sewers



ADAPT-A-VALVE™ INSPECTION CHAMBERS



More than just a "Sewer Access"

PATENTED ADAPT-A-VALVE™ TECHNOLOGY

Extendable Cassette Technology allows Chamber Body to be converted to:

- "Normally-closed or "Normally-open backflow protection
- "Test Gates" allows chamber to be used as a pressure test device or as an "isolation" or "Sewer Shut-off" Valve



S.T.E.P. For "Septic Tank Elimination Programs" or when "Replacing Sewer Laterals"
Protect against backflow by installing the "Adapt-a-Valve™" series "Inspection Chambers or Backwater Valves"